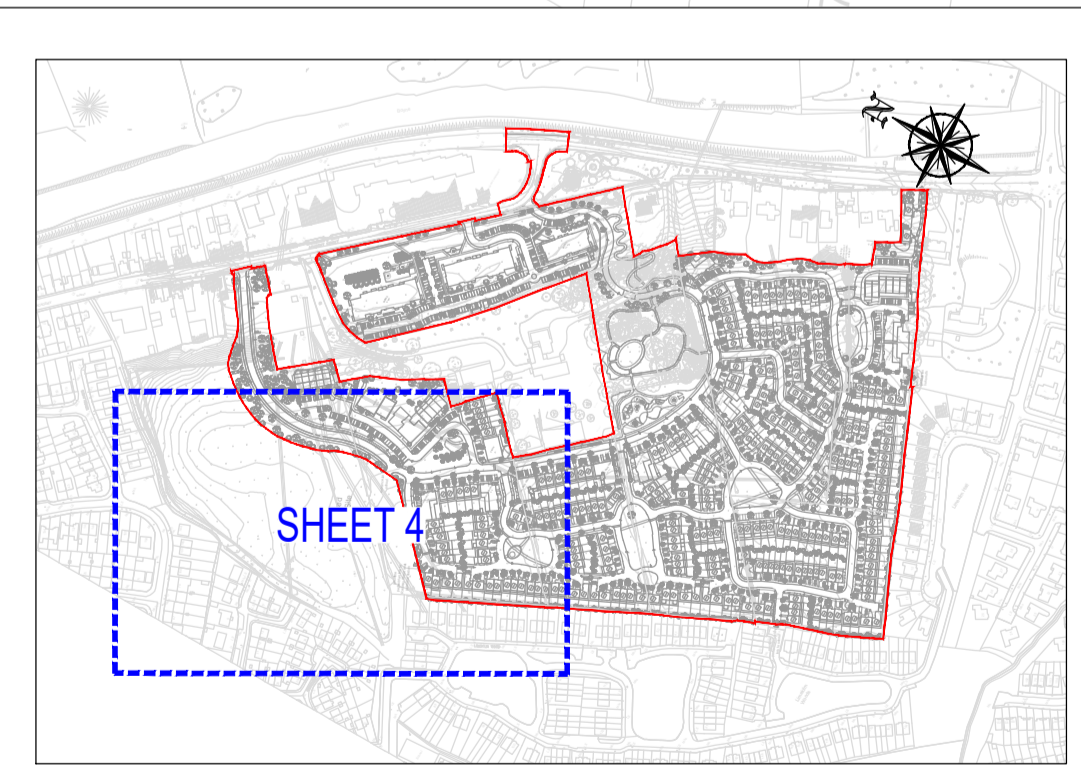
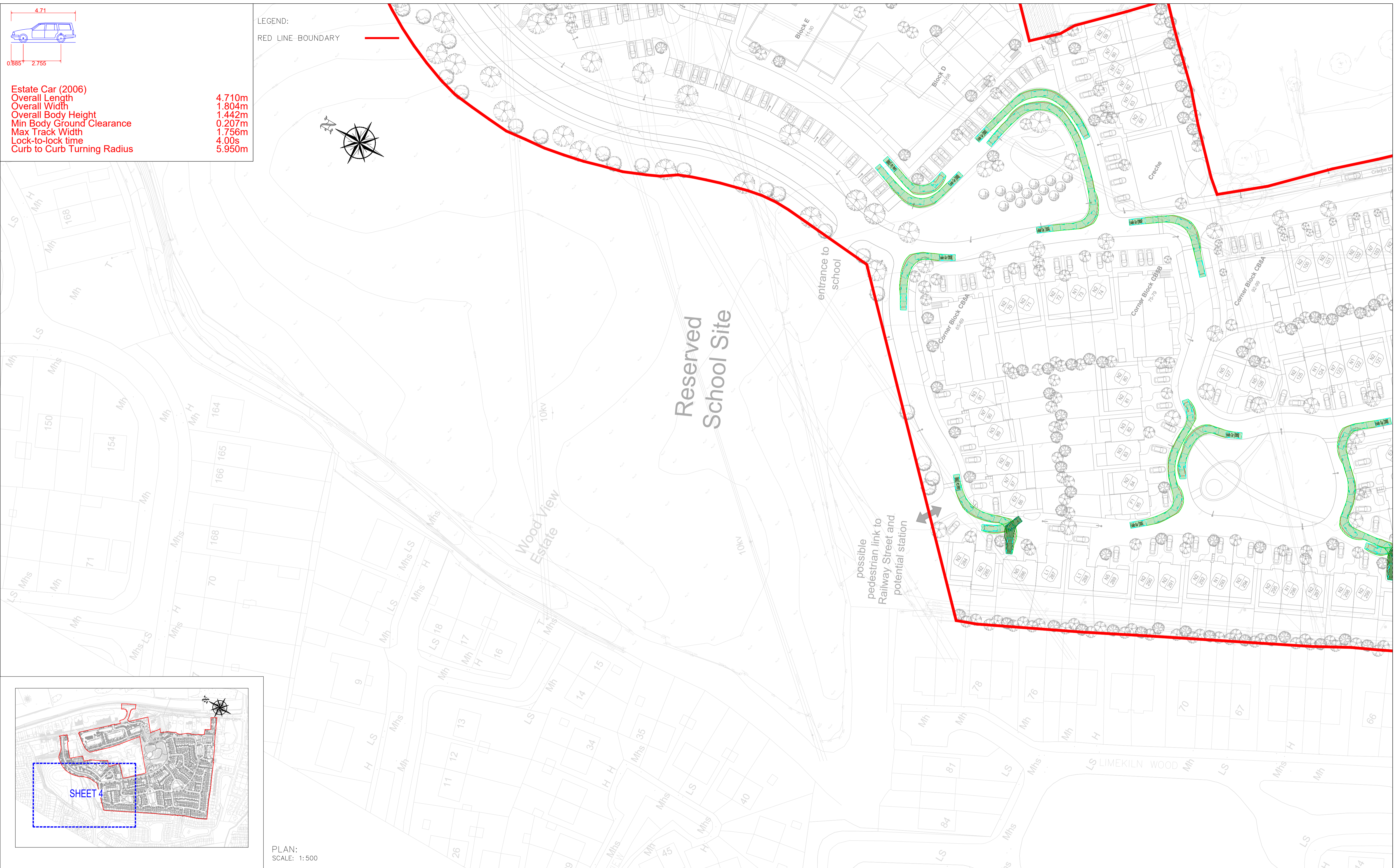
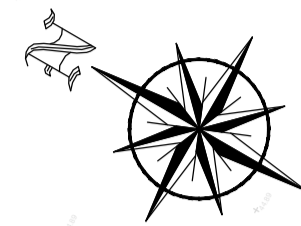


Estate Car (2006)
 Overall Length 4.710m
 Overall Width 2.755m
 Overall Body Height 0.885m
 Min Body Ground Clearance 0.207m
 Max Track Width 1.756m
 Lock-to-lock time 4.00s
 Curb to Curb Turning Radius 5.950m

LEGEND:
 RED LINE BOUNDARY



PLAN:
 SCALE: 1:500

PLANNING DRAWING
 NOT FOR CONSTRUCTION THIS DRAWING HAS BEEN ISSUED FOR INFORMATION PURPOSES ONLY AND MUST NOT BE USED FOR CONSTRUCTION UNDER ANY CIRCUMSTANCES

NOTES
 1. For setting out refer to Architect's drawings.
 2. This drawing to be read in conjunction with all other Architectural and Engineering drawings and all other relevant drawings and Specifications.
 3. DO NOT SCALE THIS DRAWING. Use figured dimensions only.
 4. No part of this document may be reproduced or transmitted in any form or stored in any retrieval system of any nature without the written permission as copyright holder except as agreed for use on the project for which the document was originally issued.
 5. Ordnance Survey Ireland Licence Number EN 0074019

Rev. No.	Date	REVISION NOTE	Drn. By	Chkd. By
A	01.10.2019	ARCHITECT'S LAYOUT REVISED	JS	NB
B	15.11.2019	ISSUED FOR PLANNING	DD	NB

Architect	Conroy Crowe Kelly	
Project	Belmont	
Title	Swept Path Analysis Car Sheet 4 of 4	
Drn. by	Chkd. by	Appr. by
JC	NB	NB
Date	Scale	Dwg. No.
Mar 2019	1:500 @ A1	D061/049
		Revision
		B

CS Consulting Group
 DUBLIN | LONDON | LIMERICK

Head Office
 19-22 Dame Street, Dublin 2.
 T: +353 (0)1 5480863 F: +353 (0)1 9011355
 e: info@csconsulting.ie
 w: www.csconsulting.ie

Quality Environment
 Health & Safety

IS. EN ISO 9001:2008
 IS. EN ISO 14001:2004
 IS. EN ISO 50001:2011
 OHSAS 18001:2007